

PlugLink® 9650

Ethernet Adapter



Home Networking... It's Easier than You Think.



PlugLink® 9650 Ethernet Adapter

The Easiest Home Networking Around. The PlugLink® 9650 Ethernet Adapter from Asoka® makes it easier than ever to set up a home or office network, allowing quick connectivity for high-speed Internet access, sharing documents and photos, gaming, audio, voice, and even video.

Can support multiple streams of standard definition (SD) TV, making it ideal

With speeds up to 85 Mbps, the PlugLink 9650 delivers fast Internet surfing and document sharing. Online gaming is optimized without the interference commonly caused by erratic wireless setups. The PlugLink 9650 can support multiple streams of high-definition (HD) TV, making it ideal for connecting to entertainment media devices like Tivo®, other digital video recorders (DVRs), or set-top boxes, and for IPTV applications.

Simple to Plug In and Connect™

Using the world's most pervasive and ubiquitous network architecture - electrical wiring - as the medium for data transmission, the PlugLink 9650 provides a flexible network solution that covers an entire home or office. The inconveniences of messy cabling and the annoyances of wireless dead spots are now a thing of the past. The PlugLink 9650 turns every power outlet into an Ethernet network connection, making home networking as easy as plugging in a night light.

Ultimate Network Security and Protection

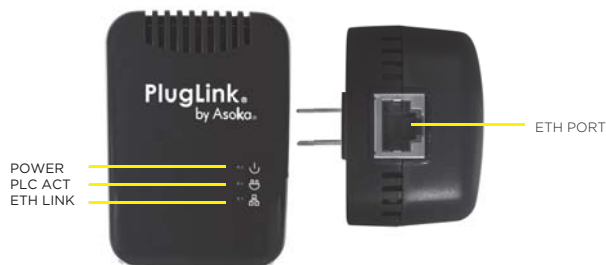
Because it uses the electrical wiring as the network medium, the PlugLink 9650 is an extremely secure network solution. Anyone attempting to hack data on the power grid faces fortress-like security. The PlugLink 9650 features 56-bit DES data encryption, with a military-grade encryption key physically built right into the silicon within the adapter.

A Trustworthy, Reliable Network with No Fuss

The PlugLink 9650 is designed so that it doesn't interfere with other home or office devices. Plus, it features advanced automatic error detection and correction technologies for rock-solid connectivity without missing a beat (or a byte).

PlugLink® 9650

Ethernet Adapter



Suitable Applications

Standard Video TV (SDTV) Distribution
TV over IP (IPTV)
Higher data rate broadband sharing
Voice Over IP (VOIP)
PC files and applications sharing
Network and online gaming
Security cameras and video server

System Requirements for the configuration software

Windows 98SE OS+
Mac OS X
Linux
Available Ethernet port
200 Mhz or faster Processor
64MB of RAM
CD-ROM drive

Standards

IEEE 802.3
IEEE 802.3x
IEEE 802.3u
HomePlug 1.0

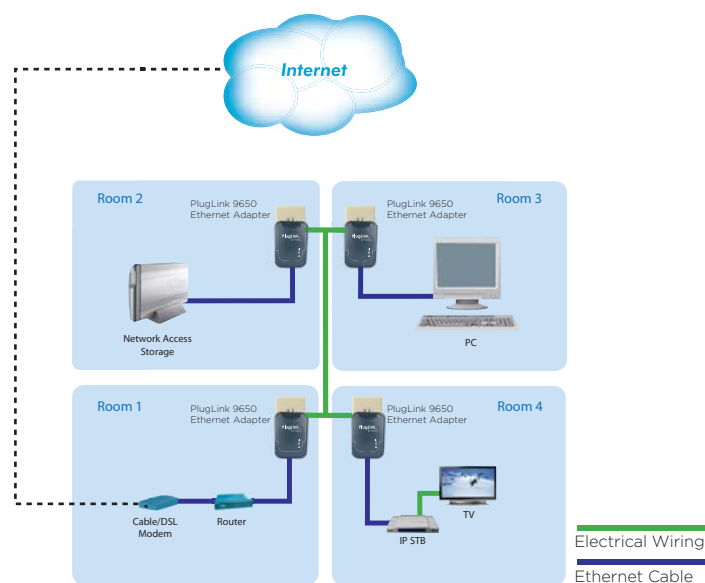
Specifications

Network Protocol: TCP/IP
Network Interface: Ethernet RJ-45
Bandwidth: 85 Mbps
Distance (Range): 200 meters
Security: 56-bit DES encryption
Operation Frequency: 4-21 Mhz
Quality of Service (QoS): OFDM, CSMA/CA, QAM 256/64/16
Power Consumption: 100V-240VAC
Safety & EMI: FCC, UL, cUL, CE
Dimensions: 3.5"l x 2.4"w x 1.8"h
Weight: 125g
1-year limited Warranty

Package Contents

PlugLink 9650 Ethernet Adapter
Ethernet cable
Quick installation guide
Warranty & support card
Resource CD

Typical Network Diagram



Available Plug Types:



Asoka USA Corporation
558 Pilgrim Drive, Suite H
Foster City, Ca. 94404
(650)286-1700 phone
(650)286-1790 fax
www.asokausa.com

© Copyright 2007, Asoka USA Corporation. All rights reserved.
PlugLink, PlugLAN, SmartBridge, PowerView, Asoka and the Asoka logo
are either registered trademarks or trademarks of Asoka USA Corporation.